

BATTERY: 12v single battery system (30amp charger, analogue Amp meter, anderston plug, etc.)
Solar wires from battery to roof

DOOR: Camec tri-lock with security grill

EASY LIFT: Standard on all pop tops with gas struts & scissor arms

FLOOR: 12mm highly water resistant ply
Glued and screwed to chassis
Coated with waterproof membrane underneath

FRAME: Meranti Frame bolted on corners
Bolted on chassis

FRONT SHAPE: Aerodynamic curved front

GAS CYLINDER: 9kg fitted on A frame (2 x 9kg to ensuite models)

GAS POINT: Bayonette fitting for BBQ

GAS/ELECTRICITY HWS: Ensuite models

GRAB HANDLE: Illuminated at main door

HATCHES: 1 x hatch caravans to 16'6"
2 x hatch caravans 17' & over

INSULATION: Full

LIGHTS: Front & side clearance lights & reflectors
Large safety tailights
Annexe light 12v x 2
12v light in boot

PEBBLEGUARD: Padded to top of boot

POP TOPS: Available std profile 7'6 3/4" and low profile 7'0 3/4"
3 ply PVC block out sleeve UV stabilised

POWER POINTS: Inlet fitted to offside
Outlet fitted to door side

STONESHIELDS: Fitted standard over front and rear windows

TAP: On A frame

TV POINT: Awning side

WATER: Mains pressure inlet with clip on fitting,
waste water outlet to offside

WATER FILLER: Lockable

WHEEL SPATS: UV stabilised wheel spats most models. Vans fitted with "Off-Road" wheels or chequerplate sides no spats fitted

WINDOWS: All wind out Jupiter Camec

INTERIOR

BEDS: Queen width european slat top double bed lift up with gas struts
Single bed lift up with gas struts and drawers under
Fixed padding to single bed covered in upholstery material.

BENCH TOPS: Lacquered timber edges

BLINDS: Venetian

DINETTE: 5" high density foam seats
Lift up tops for storage access

DINETTE DOOR: Standard all models

DRAWERS: On metal rollers

DRESSING TABLE: Double bed models complete with mirror & power point

FIRE EXTINGUISHER: Standard 1kg

FLOOR COVERINGS: Colour co-ordinated vinyl

FRIDGE: Dometic RM 7401 3 way vans up to 17'
Dometic RM 2553 3 way vans 17'6" and above

HAND BASIN: Fitted standard in all ensuite models

KITCHEN BENCH: Lift out flap where applicable

LIGHTS: Round fluorescent ceiling light 12v
12 v Reading lights to each bed
12 v Toilet/Shower light
12 v light over sink
12 v light in boot

LINEN CUPBOARD: In bedroom (most double bed models)

LOUNGE: 5" high density foam seats
Lift up tops for storage access

MATTRESSES: Innerspring

MICROWAVE: Standard all models

MIRROR: Fitted to robe on single bed models
Above corner dressing table on double bed models

OVERHEAD CUPBOARDS: Lift up with metal spring struts
Silver hinges and push button handles

PANTRY: Pullout pantry standard (most front & rear kitchen models)

PELMETS: Timber

POT DRAWER: Fitted in kitchen

POWER POINTS: Double to kitchen
Single elsewhere

RANGEHOOD: 12 volt Swift

SHELVES: Where applicable with timber rail edges

SHOWER: Adjustable chrome rail and shower rose (ensuite model)

SINK: Stainless Steel deep bowl

SOAP DRAWER: Standard all layouts

STEREO: CD/DVD player with 2 internal speakers and aerial

STOVE: 3 gas burners, 1 electric element, grill, fan forced oven and wok burner

TABLE TOPS: Lacquered timber edges

TAPS: Flick mixer with 12v pump
Mains pressure

TEMPERATURE LIMITING VALVE: Temperature control tempering valve
standard on all luxury ensuite models

TIMBER FINISH: Tasmanian Oak doors

TOILET: Cassette toilet fitted standard in all ensuite models
Toilet Roll Holder (under toilet standard in all ensuite models)
Toilet Rail: standard most models (under toilet)

TV ANTENNA: Winegard

TV: Coaxial plug, power point, TV and pivot arm

UPHOLSTERY: Pillow upholstery lounge & dinette (most Models)

WARDROBES: Complete with built in dressing tables (most models)
Concealed drawer 1 robe only
Full hanging opposite side
Removable shelf to robe without drawer

WATER FILTER: Mains pressure water filter fitted to all vans

WATER LEVEL INDICATOR: Standard all models for water tanks

* Robes may differ depending on layout
* Pictures are for illustration purpose only
* Please note. Due to ongoing improvement, features and specifications may change without prior notification.

YOUR NEAREST COMPASS DEALER:



COMPASS CARAVANS
A division of Australian Hitec Engineering Pty Ltd
TEL: (03) 9301 8700 FAX: (03) 9302 3722
4-6 LISA PLACE COOLAROO VIC 3048
www.compasscaravans.com.au JUNE 2009

Compass



Aurora

new direction in touring

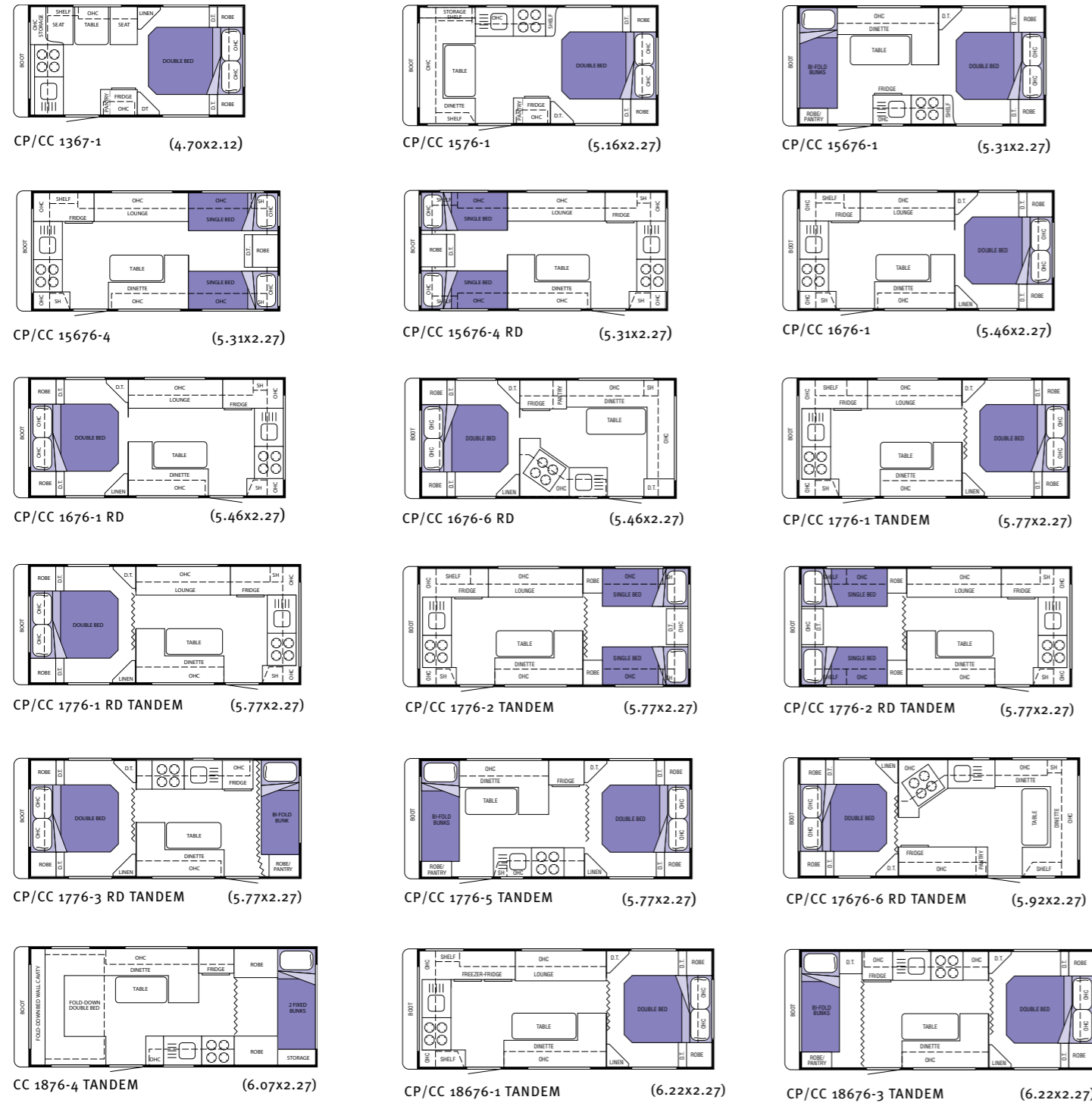


Aurora models

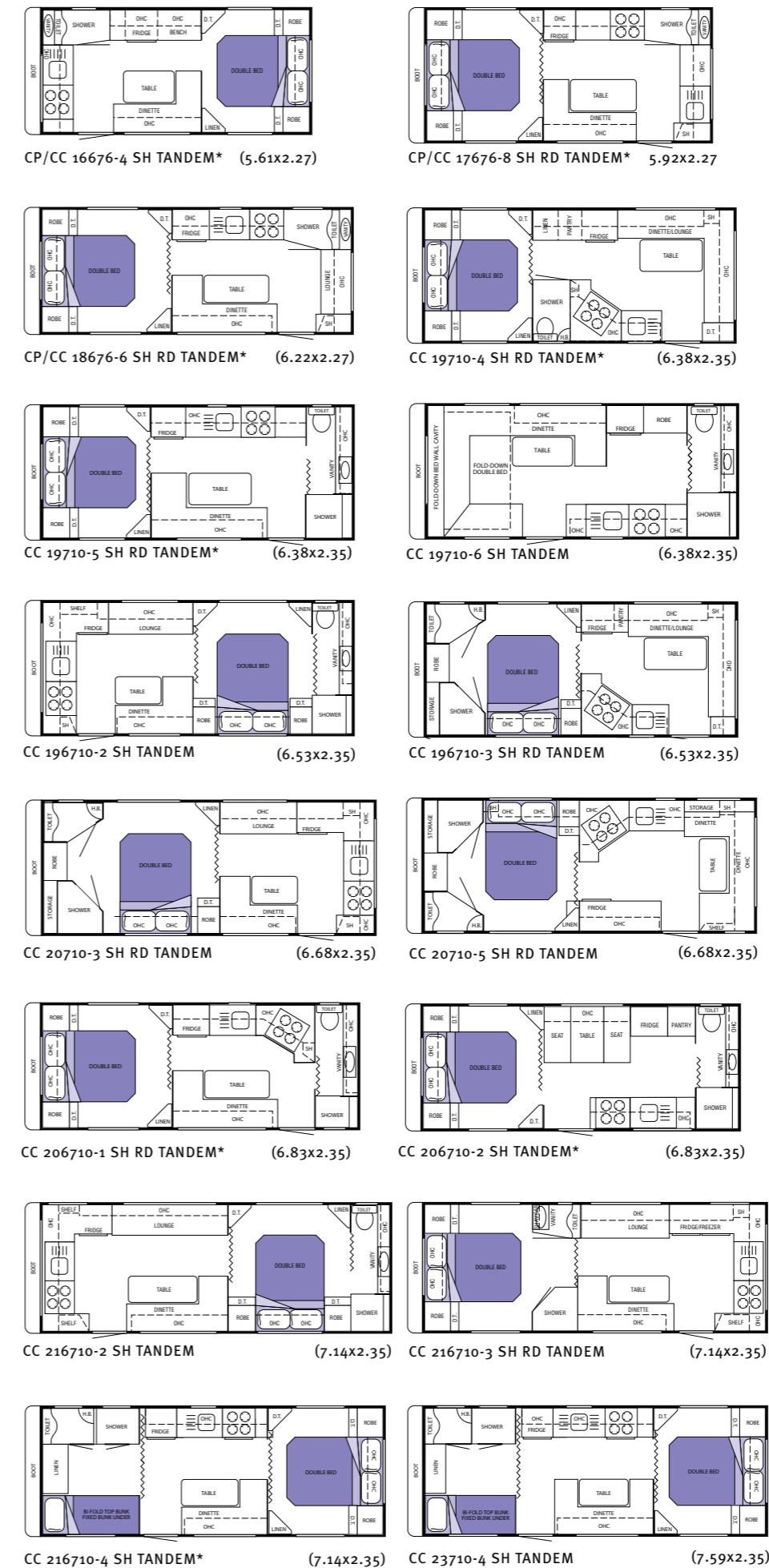


The Compass Caravan offers an exceptional range of services designed to make your custom caravan build easy and inspiring. Contemporary styling, choice and competitively priced.

Safety first with Compass: Over pressure relief valve standard on gas cylinders • Smoke detectors standard on all vans • Electric brakes to all wheels • Residual current device (earth leakage detector) standard all vans • Temperature limiting valve (Luxury ensuite models only) • Fire Safety Kit (1kg fire extinguisher & security fire blanket) • Water Purifying Filter



Aurora Luxury ensuite models



Aurora specifications and features

The Compass Caravan offers an exceptional range of services designed to make your custom caravan build easy and inspiring. Contemporary styling, choice and competitively priced.

CHASSIS

CHASSIS: Heavy duty boxed steel Supagal®

'A' FRAME: Heavy duty Supagal®
Extended to door step front door models
To axle on rear door models

ARCHES: Fully sealed galvanised

AXLE: Single up to 16'. Tandem 16'6" to 23'

BRAKES: Electric brakes standard to all wheels

BUMPER BAR: Supagal®

BREAKAWAY: Breakaway switch and 12 volt lead acid battery to all tandem axle vans

CORNER STABILISING LEGS: Quick release drop down

COUPLING: Quick release lockable with 2 safety chains

JACK: All models standard with Trail-a-mate jack and 4 way wheel brace

JACKING: All vans fitted with jacking point both sides

JOCKEY WHEEL: Centre mounted removable 6" wheel up to 16'6", and 8" for vans 17' and over

MUD FLAPS: Standard

SPARE WHEEL: Mounted to bumper bar

STEP: Chequer plate drop step
Camec portable step supplied to all vans with "Off-Road" wheels and 6" main rails on vans with step height exceeding 400mm from the ground

SUSPENSION: Beam axle with leaf springs

TYRES: 14" light truck

WATER TANKS: 1 x 95 litre with galvanised protection
2 x 95 litre to ensuite models

WHEELS: LA 24 alloy

EXTERIOR

ALUMINIUM: White smooth low profile

AWNING: Fitted as standard
8300 vans up to 19'
8500 vans 19'6" and above

BOOT: 400mm deep galvanised with 565 mm lid on gas struts

*Please note measurements are approximate metric external. Floor plans are not to scale. Floor plans shown are based on the Aurora Caravan. Please note there are some differences between Caravan and Pop Top layouts in general. (Please refer to specifications).

*Models indicated with asterisk are also available with single beds. Please note CC denotes caravan and CP denotes pop top. (Please refer to floor plans).